

# NT74L



28.6×10.1×12.6

## Features

- Latching relay.
- Small size and light weight.
- Contact switching capacity can reach 10A.
- PC board mounting is available.

## Ordering Information

**NT74L** C S DC12V D R G  
 1 2 3 4 5 6 7

1 Part number:NT74L  
 2 Contact arrangement:A:1A; C:1C  
 3 Enclosure:S: Sealed type; Z: Dust cover  
 4 Coil rated voltage(V): DC:5,6,9,12,24

5 Coil : NIL:Single coil; D: double coils  
 6 Polarity: Nil: standard; R: reverse polarity  
 7 Contact plating:NIL:Standard; G:Gold plated

## Contact Data

Contact Arrangement	1A (SPSTNO) 1C (SPDT(B-M))	
Contact Material	AgSnO <sub>2</sub>	
Contact Rating	10A/250VAC,30VDC	
Max. Switching Power	300W 2500VA	
Max. Switching Voltage	125VDC 440VAC	Max. Switching Current:10A
Contact Resistance or Voltage drop	≤100mΩ	Item4.12 of IEC61810-7
Operational life	Electrical	5×10 <sup>4</sup> Item 4.30 of IEC 61810-7
	Mechanical	10 <sup>7</sup> Item 4.31 of IEC 61810-7

## Coil Parameter

Dash numbers	Coil rated voltage VDC	Coil resistance Ω ±10%	Switching voltage VDC (70% of rated voltage )	Pulse magnitude ms	Coil power consumption W	Operate Time ms	Release Time ms
1 coil							
005-250	5	100	3.5	≥30	0.25	≤10	≤10
006-250	6	144	4.2				
009-250	9	324	6.3				
012-250	12	576	8.4				
024-250	24	2300	16.8				
2 coil							
005-380	5	2×52	3.5	≥30	0.48	≤10	≤10
006-380	6	2×75	4.2				
009-380	9	2×170	6.3				
012-380	12	2×300	8.4				
024-380	24	2×1200	16.8				

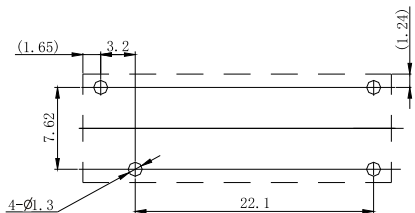
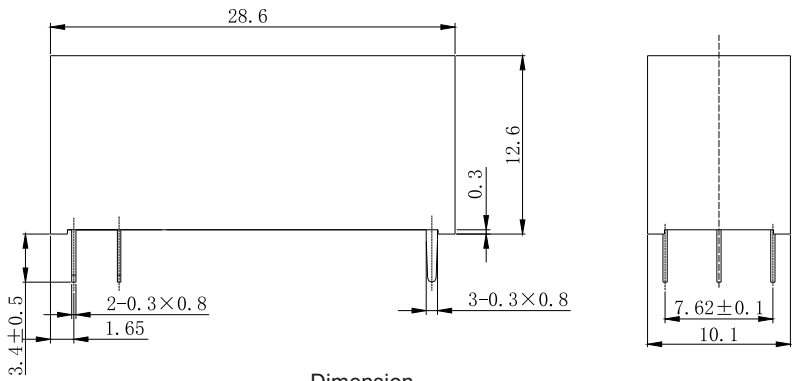
**CAUTION:** 1.When latching relays are installed in equipment, the latch and reset coil should not be powered simultaneously. Coil should not be pulsed with less than the nominal coil voltage and pulse width should be a minimum of three times the specified operate time of the relay. If these conditions are not followed, it is possible for the relay to in be the magnetically neutral position .  
 2.Switching voltage is for test purpose only and are no to be used as design criteria.

**Operation condition**

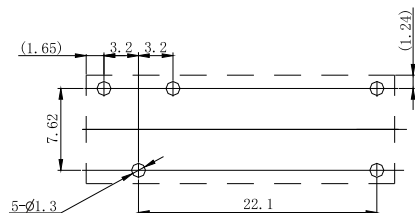
Insulation Resistance	1000MΩ min (at 500VDC)	Item 7 of IEC 60255-5
Dielectric Strength Between contacts Between contact and coil	50Hz 1000V 50Hz 5000V	Item 6 of IEC 60255-5 Item 6 of IEC 60255-5
Shock resistance	Functional:98m/s <sup>2</sup> Destructive:980m/s <sup>2</sup>	IEC 68-2-27 Test Ea
Vibration resistance	10Hz~55Hz double amplitude 1.65mm	IEC 68-2-6 Test Fc
Terminals strength	10N	IEC 68-2-21 Test Ua1
Solderability	260°C±5°C 5s±0.5s	IEC 68-2-20 Test Ta method 1
Ambient Temperature	-40°C~85°C	
Relative Humidity	5%~85% (at 40°C)	IEC 68-2-3 Test Ca
Mass	Approx.8g	

**Dimensions**

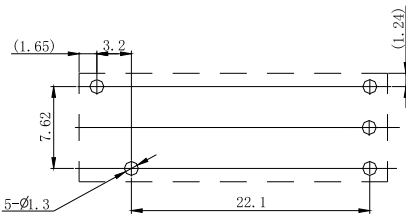
mm



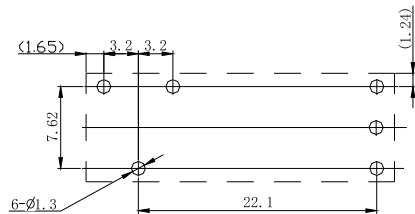
1A



1C



1AD



1CD

Mounting (Bottom view)