



60×40×22

NE720

Features

- Magnet latching relay.
- High sensitivity & reliability.
- Well anti-shock and anti-vibration.
- Heavy contact load.

Ordering Information

NE720 A Z DC12V D

1 2 3 4 5

1 Part number: NE720
 2 Contact arrangement: A:1A; B:1B

3 Enclosure: Z: Dust cover
 4 Coil rated voltage(V): DC:6,12, 24,48
 5 Coil:NIL:single coil ;D:double coils

Contact Data

Contact Arrangement	1A SPSTNO	1B SPSTNC
Contact Material	AgSnO ₂	
Contact Rating(resistive)	100A _{max} /240VAC	
Max. Switching Power	23000VA(COS =1)	2300VA(COS =0.4)
Max. Switching Voltage	400VAC	Max. Switching Current:100A
Contact Resistance or Voltage drop	1m	Item 4.12 of IEC 61810-7
Operation life	Electrical (Rated load)	10 ⁶ Item 4.30 of IEC 61810-7
	Mechanical (No load)	10 ⁸ Item 4.31 of IEC 61810-7

Coil Parameter

Dash numbers	Coil rated voltage VDC	Coil resistance ±10%	Switching voltage VDC (<80% of rated voltage)	Operating voltage range VDC	Pulse magnitude ms	Coil power consumption W	Operate Time ms	Reset Time ms
2 COIL								
006-4500	6	2 8	<4.8	6~10	36	2 4.5	12	6
012-4500	12	2 32	<9.6	12~20				
024-4500	24	2 130	<19.2	24~40				
048-4500	48	2 512	<38.4	48~80				
1 COIL								
006-2250	6	16	<4.8	6~10	36	2.25	12	6
012-2250	12	64	<9.6	12~20				
024-2250	24	260	<19.2	24~40				
048-2250	48	1024	<38.4	48~80				

CAUTION: 1.When latching relays are installed in equipment, the latch and reset coil should not be powered simultaneously. Coil should not be pulsed with less than the nominal coil voltage and pulse width should be a minimum of three times the specified operate time of the relay. If these conditions are not followed, it is possible for the relay to in be the magnetically neutral position .
 2.Switching voltage is for test purpose only and are no to be used as design criteria.

Operation condition

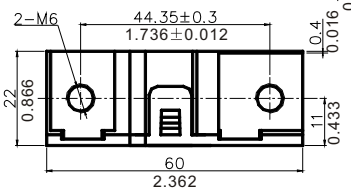
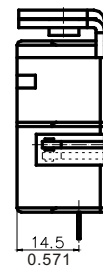
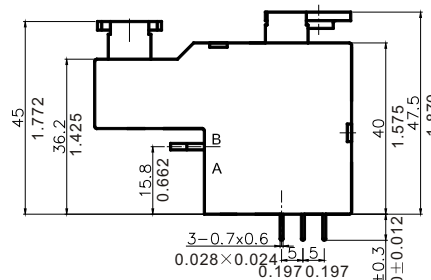
Insulation Resistance	1000M min (at 500VDC)	Item 7 of IEC 60255-5
Dielectric Strength Between contacts Between contact and coil	50Hz 2000V surge Voltage 4kV 50Hz 4000V surge Voltage 12kV	Item 6 and 8 of IEC 60255-5 Item 6 and 8 of IEC 60255-5
Creepage distance	8.4mm	Addenda B of IEC 60255-5
Shock resistance	Functional 100m/s ² ; Survival: 1000 m/s ² 11ms	IEC 68-2-27 Test Ea
Vibration resistance	10Hz~55Hz Double amplitude 1.5mm	IEC 68-2-6 Test Fc
Terminals strength	5N; 2.5N • m	IEC 68-2-21 Test Ua1 and Ud
Solderability	260 5 5s 0.5s	IEC 68-2-20 Test Ta method 1
Ambient Temperature	-40 ~85	
Relative Humidity	85% (at 40)	IEC 68-2-3 Test Ca
Mass	82g	

Safety approvals

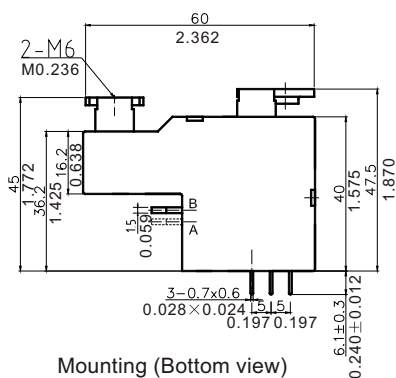
Safety approval	CQC
Load	100A/220VAC

Dimensions

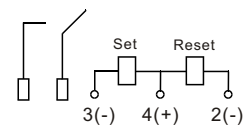
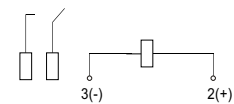
mm /inch



Dimensions



Mounting (Bottom view)



Wiring diagram

Notes: A:NC side
B:NO side

NOTES 1).Dimensions are in millimeters.

2).Inch equivalents are given for general information only.

3).Relays shall have plus(+) or plus(+) and minus(-) signs placed on the circuit diagram as shown.